

# TRANSFORMED BY GRACE

## 2024-2025 ANNUAL REPORT



*"Do not conform to the pattern of this world, but be transformed by the renewing of your mind. Then you will be able to test and approve what God's will is—his good, pleasing and perfect will." - Romans 12:2*

pearl  
LIFE RENEWAL  
SOCIETY

# Table Of Contents

## INTRODUCTION

Who We Are	01
Message from the Director	02

---

## FINANCIALS

Message from the Treasurer	04
Financial Report	05

---

## WHO WE ARE

Staff & Volunteers	06
Why I Work at PEARL	07
Centre Highlights	08
Practicum Placement Testimony	09
Pray With Us	10
With Remembrance	11

---

## WHAT WE DO

How Has PEARL Helped You?	12
Centre Stats	13

---

## CONCLUSION

Why I Support PEARL	14
Letter from the Founders	15

---

# Who We Are

# 2017

the year we opened

## Our Mission

PEARL empowers girls and women who are sexually exploited, trafficked and in prostitution, through support, education, and Jesus' love, to embrace hope and renewal.

## Our Vision

We envision girls and women safe, protected from sexual exploitation and prostitution and experiencing well-being.

# 380

women have accessed  
PEARL since 2017

## Core Values

### Christ Centeredness

Because Jesus' love and words are foundational and transformational, we attempt to live those out in the promotion of truth and justice for sexually exploited and prostituted girls and women.

### Caring

Extending respect, grace, confidentiality and compassion to sexually exploited and prostituted girls and women in the acknowledgement of their experienced traumas.

### Excellence

In services offered and with integrity in using resources.

### Holistic Transformation

Encouraging sexually exploited girls and women's renewal and wellbeing in body, mind, spirit and relationships.

### Collaboration

Encouraging community involvement in the continuum of care to facilitate sexually exploited girls' and women's access to services and resources.

# Message from the Director

## **Standing in the Gap**

We are so deeply grateful for your continued support of PEARL. This past year, we have witnessed the fruit of many prayers as women have taken courageous steps toward change—often at the most critical moments of their lives.

At the Resource Centre, our frontline work continues to serve as a place of triage between life and death. Heartbreakingly, we have seen the streets claim some lives, a sobering reminder of the failures within our systems. Yet it is in these moments that PEARL steps into the gap. For many women, rock bottom becomes the place where they finally look up—longing for hope—and they discover in PEARL a reminder that they are not forgotten.

***“You reminded me that I am worth it, and that gave me hope and helped me believe I could.”***

***“I wouldn’t be alive without PEARL, because I had lost all hope.”***

This past year, PEARL has seen record numbers of intakes, workshop participation, and applications for detox and treatment. The demand has stretched our capacity by one-third, requiring us to bring on additional staff and open extra days to meet the growing need.

## **Supporting Recovery and Transformation**

Our greatest joy is walking alongside women as they take steps from the streets toward recovery—a journey that can feel overwhelming without support.

PEARL remains a familiar, steady presence by offering 24-hour text support, transportation to detox and treatment, and follow-up visits. Together with the women, we have celebrated families being reunited, recovery milestones achieved, and new life in Jesus embraced.





We go beyond practical support, walking in new life with them—attending church and Celebrate Recovery, and even experiencing new joys like a trip to see the ocean for the very first time. This is what it means for PEARL to stand in the gap: to walk alongside women, meeting them right where they are. We offer hope, and it is in those moments that we witness lives transformed by grace.

A PEARL participant experiencing the beach for the first time.

### Growing Impact

With these successes, PEARL's reputation in the community has grown through many referrals and collaborative partnerships. We are increasingly recognized as strong advocates for the most vulnerable. Service providers share, ***"We love what you guys do. The women speak so highly of PEARL."***

Looking ahead, we are prayerfully preparing to expand our capacity even further. We thank you for your faithful partnership and ask you to continue to stand with us for the provision needed to meet this year's growth as we move toward developing and fulfilling PEARL's vision for 2026.

*Cindy Sommerfield*  
EXECUTIVE DIRECTOR



# Message from the Treasurer

This year's annual report reflects PEARL's ongoing journey of transformation through God's grace. Within these pages, you will find stories shared by our staff and volunteers about "standing in the gap" for women in need. Together, we celebrate the joy of walking alongside women in their recovery and transformation. We invite you to listen to the words of thankfulness from those impacted by PEARL's growing presence in our community.

As you will see from our statistics, our impact continues to expand. This is good news—and we are deeply grateful that more women are finding their way to PEARL. For all of us, it is both an honour and a privilege to serve God in this way. We ask you to join us in this mission. Your support is vital. Each day, your love and generosity—whether through a financial gift or an act of care—make a powerful difference in the lives of women seeking hope and healing.

Throughout this report, you will also notice the presence of God's Word. It is only through His guidance that we can share so many heartfelt stories. We encourage you to read these testimonies of transformation and allow them to inspire you as you continue to support PEARL's work in our community.

While we rejoice in the many successes of this year, we also acknowledge the reality that we end the year with a deficit. Please refer to the financial graphs for details. I welcome any comments or questions you may have at [admin@pearlliferenewal.com](mailto:admin@pearlliferenewal.com).

On behalf of the Board of Directors, I thank you sincerely for your ongoing care and support.  
Warm regards,

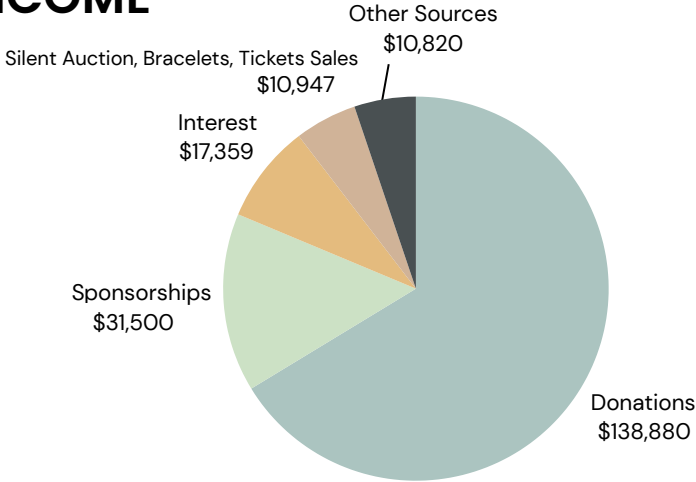
*Deborah Woelders*

TREASURER



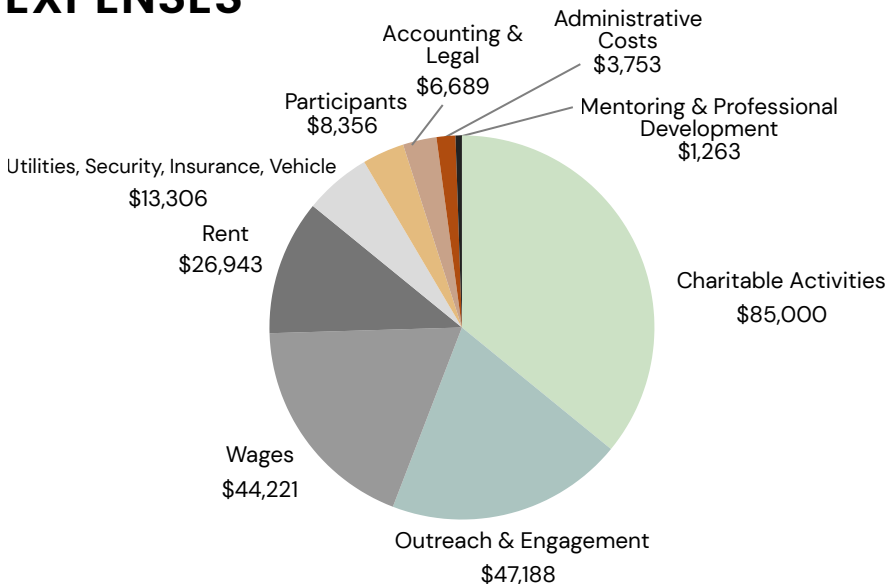
# 2024-2025 Fiscal Year Financial Report

## INCOME



**TOTAL REVENUE: \$209,506.00**

## EXPENSES



**TOTAL EXPENSES: \$236,719.00**

# Staff & Volunteers



From left to right: Cheryl, Carmelyn,  
Cindy S., Debbie, & Cindy D.



Kristi—our lovely  
events coordinator

***“Just as a body, though one, has many parts,  
but all its many parts form one body, so it is with Christ.”  
– 1 Corinthians 12:12***

Moments captured this past year:



We are so thankful for all our staff and volunteers (Marlene & Kimberlei)  
who help make PEARL such a welcoming place!

# Why I Work at PEARL

Years ago, I remember hearing missionaries preparing to go to Mozambique say, “We wanted to go to the darkest part of the world to see if the Gospel works.” That phrase has stayed with me. Because addiction is dark. Trafficking is dark. Homelessness is dark. Trauma is dark.

But if I truly believe that a relationship with God—through what Jesus did on the cross—is life-changing, then I must plant seeds of faith, truth, and agape love into the hearts of women trapped in these dark places.

Throughout our lives, we’ve witnessed the devastating impact of addiction and trauma on those we love. The depth of loss and hopelessness often hangs by a fragile thread of faith—just enough to believe that God is real. And yet, we’ve also seen the power of that mustard seed of faith. We’ve seen it transform lives, lifting people from the depths of despair into His marvellous light, into sobriety, healing, and wholeness in Him.

This is the power of hope. It’s what we cling to. It’s what we serve from. We believe that God desires us to be His hands and feet—to carry His love into the places others fear to go.

One verse that has always stood out to me is **James 1:27: “Religion that God our Father accepts as pure and faultless is this: to look after orphans and widows in their distress and to keep oneself from being polluted by the world.”** God the Father’s heart is full of compassion for those in distress, and I want to have His heart.

My prayer is that I will walk in step with the Holy Spirit to be part of God’s plan for the lives of the precious women who attend PEARL.

*Debbie*

SUPPORT WORKER



# Centre Highlights



- PEARL is spearheading an immediate response group for women at an elevated risk of sexual violence.
- More spiritual/pre-recovery workshops are being requested, and clients are responding positively!
- There has been an increase in detox placements this past year.
- Two clients have been consistent in moving up to stage 2 and stage 3 of their recovery journey.
- Heartwarming memories were created during family reunions, bringing joy and connection to our participants.
- Women are becoming more open to faith and are attending church services and events such as Celebrate Recovery!
- PEARL advocates for women, reducing preventable deaths by ensuring that women in critical condition receive timely medical care at the hospital.
- Birthday celebrations and special holidays are highlighted in the centre, which is greatly appreciated by the participants!

“PEARL gave me the best birthday that I've had in a very long time. It made me feel really seen and loved. -A”



# Practicum Placement Testimony

My time here at PEARL has been incredible!

I felt so welcomed and encouraged by the staff here, but I also felt that I've formed great friendships with each of them. Cindy S. has poured so much into me – giving me an opportunity to get Naloxone training, visit other service providers, sit in on intakes and housing interviews, and encouraged and uplifted me daily. She has gone above and beyond the supervisor role, even putting together an incredibly thoughtful housewarming gift for me.

Seeing the staff pour into each other and each of the clients has been inspiring to me. At PEARL, the clients don't have to wonder if they're seen or loved. They are known by name, and there are always safe spaces for them to be vulnerable and open up.

Lives are being changed here – only by the grace of God and the staff's willingness and desire to be led by the Holy Spirit in all they do.

God is present in this place. I see Him in every interaction with the women, in the mornings we spend in prayer over the centre, and in the way peace somehow shines in the centre despite the chaos many of our clients are living in.

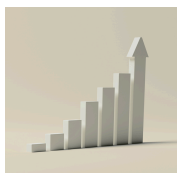
I'm going to miss this place and these beautiful people!

*Makenzie*  
PRACTICUM STUDENT

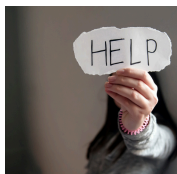


# Pray With Us

In the past year, we've also encountered many **challenges & trials.**  
We invite you to please pray with us for these things:



The daily average of women coming into the centre has drastically increased. Pray for a new space for us that will allow us to accommodate the vulnerable population as we have now outgrown our current space.



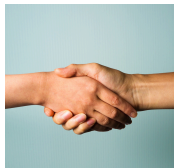
Increased reported incidents of violence and abuse. Pray for resources to open doors immediately for those needing detox and safe shelter while detoxing.



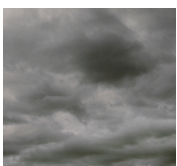
Food insecurity is on the rise. Please pray for those not getting enough to eat and for continued provision for PEARL to provide meals.



Pray over the effects of the toxic drugs in the community and how they are contributing to a decline in mental health due to the contaminants and the trauma experienced by those under the influence.



Pray for the continued growth of partnerships and collaborations with other organizations that share our vision and values. Pray for favour with those who hold differing views, that we might be a light.



Pray for the gaps in the system regarding the increasing number of young girls struggling with addiction.



# With Remembrance

PEARL has extended its services recently to support families who have lost loved ones to suicide, toxic drugs and suspicious deaths.

Please partner with us in prayer for the broken.



***"The LORD is close to the brokenhearted and  
saves those who are crushed in spirit."***

***Psalm 34:18***

# How has PEARL helped you?

*Real notes from our participants.*

"They advocate for me, assist in paperwork, give lunch and much needed support and prayer." -G

"PEARL gives me food, prayer, and support." -J

"They help me get things done and always follow through. And they actually care." -N

"They help show me that God loves me." -M

"All the staff members are always so welcoming, allowing me to feel at home so my mind can be clear to be able to focus on healthy choices." -N

"PEARL is helping the women get their dignity back and feel like a human being again." -A

"They remind me, that I am worth it. Listen to them, they tell the truth and give good advice. I left my abusive boyfriend." -J

"PEARL celebrated my birthday when no one else cared." -C

"Going to PEARL feels like coming home." -A

"I believe PEARL saved my life, they cared enough to get me to the doctor, and it was serious." -L

# Centre Stats

*This year, PEARL spearheaded the **ERSV – Elevated Risk of Sexual Violence** task force. This is a team of service providers who act as a rapid response connecting women in crisis to resources.*

## 1332

Centre visits in the last 12 months – increase of 50%

## 51

New intakes this year  
60% increase

## 26

Disclosures of violence

### Increases are calculated since 2022–2023

- **145 individual** women accessed the centre in the last 12 months - an **increase of 40%**.
- 52 regular attendees.
- New intakes this year are still on the rise.
- Over **2848** meals were given.
- **0 Overdoses in the Centre.**
- 51 faith-based recovery workshops were attended.
- 111 recovery/support applications.
- Several women have exited the life of addiction and prostitution, professing faith.
- Women are being supported in their reunification with their families.
- 2 deaths with funerals supported.

**Women have been stepping forward not only to share but also to report incidents of violence, recognizing the power of advocacy.**

## Community Issues

- Increased spread of STDs, syphilis, and MRSA.
- Minors are being lured into addiction and prostitution.
- Increased reports of violence and sexual violence.
- Mental health crises, including severe psychosis and violence.
- Drug toxicity.
- Drug overdoses and suspicious deaths.

# Why I Support PEARL

I was introduced to the concept of PEARL when Joan and Gerry were first setting it up, and I was asked to be on the Board of Directors. I didn't know much about PEARL's purpose or what they were about to do, but I had experience with boards and their governance, and I thought I could help with their setup. God had other plans for me!

We worked through the setup, found a location, and got everything ready to open the doors, and then we waited. It took some time for the ladies who needed help to trust that PEARL could assist them, or to decide if they wanted the help PEARL had to offer. Barriers had to be broken, and walls had to be lowered on both sides, so that their needs could be seen and addressed.

PEARL supports individuals facing severe traumas and challenging circumstances that separate them from knowing Jesus. PEARL's job is to let them know He is available to help and will always support those who seek Him. He is the only one who can change lives and lead them to healing, a message that needs to be delivered to them in a kind and meaningful way. This is what PEARL does: with every little act of kindness, with every meal, and with every conversation, the staff of PEARL delivers messages of hope and truth with love and respect for the people Jesus has called to hear His message.

I don't support it because I believe we can help everyone get into a program that will help them overcome addictions. I support it because, even in our darkest moments, we all need the saving grace of Jesus, and someone needs to tell them it is available to them for free, since Jesus has already paid the cost.

*Sandy*

PEARL SUPPORTER



# Message from the Founders

PEARL opened in 2017 after many volunteers put in long, hard hours to help transform a small, dirty bakery into a clean, beautiful, home-like, welcoming space!

But in reality, PEARL started in 2015, with a clear call to “Tell the prostitutes about Me”. However, I (Joan) resisted that call. The work felt too hard, too big, and too messy! In fact, it was all of those things and much more! But God was in the details and the mess right from the start!

While it took months for the first woman to trust us enough to walk through our doors, the “trickle” eventually became a “flood” – the sad reality of a deeply broken world. Not only have we personally experienced the impact of God’s grace in our own lives, we have seen the same in many of the lives of the women PEARL ministers to, as this annual report clearly shows, and we are grateful!

We sincerely thank all board members, staff, and volunteers for your time, dedication, and God-given gifts in carrying the call of PEARL forward, despite changes in leadership. We also thank PEARL supporters for all your prayers, words of encouragement, and material and financial gifts. Together, we are making an eternal impact because God’s love and grace, through Jesus Christ, truly transforms lives that are completely surrendered in faith to Him.

***“The Spirit of the LORD is upon me, for he has anointed me to bring Good News to the poor. He has sent me to proclaim that captives will be released, that the blind will see, that the oppressed will be set free, and that the time of the LORD’s favor has come.” (Luke 4:18-19).***

Sincerely,

*Joan & Gerry Goosen*

Joan Goosen (Founder)  
Gerry Goosen (Board Chair)



*"Defend the weak and the fatherless; uphold the cause of the poor and the oppressed. Rescue the weak and the needy; deliver them from the hand of the wicked."*

*Psalm 82:3-4*



**PEARL Life Renewal Society**

PO BOX 591, Station Main  
Chilliwack, BC V2P 7V5  
604-402-HOPE (4673)  
[www.pearlliferenewal.com](http://www.pearlliferenewal.com)

*Stay connected with us through Facebook & Instagram!*

**Want to donate?**

Our Registered Charity # is: 760269092RR0001