

Light

IN THE

Darkness

pearl LIFE RENEWAL
SOCIETY
prostituted women exiting and renewing life

ANNUAL
REPORT
2023-2024

SAVE THE DATE

November 9, 2024

Central Community Church

46100 CHILLIWACK CENTRAL ROAD
CHILLIWACK, BC

Join us on
Saturday,
November 9th,
2024 @
Central
Community Church

Tickets \$30.00 or
\$210.00 for a table
of eight

Doors open at 6pm

Exciting Silent
Auction

Delicious
charcuterie buffet
& deserts

Guest Speakers

Live Entertainment

PEARL LIFE RENEWAL PRESENTS

2024 ANNUAL FUNDRAISER
AND AWARENESS EVENT

Light
IN THE
Darkness



Contact Kristi at
events@pearlliferenewal.com to purchase
tickets, reserve your table, or sponsor this
year's event!

Who We Are

7 years

the Resource Centre has been in operation since 2017

Our Mission

PEARL empowers girls and women who are sexually exploited, trafficked and in prostitution, through support, education, and Jesus' love, to embrace hope and renewal.

Our Vision

We envision girls and women safe, protected from sexual exploitation and prostitution and experiencing well being.

300

More than women have accessed PEARL since 2017

Core Values

Christ Centeredness

Because Jesus' love and words are foundational and transformational, we attempt to live those out in the promotion of truth and justice for sexually exploited and prostituted girls and women.

Caring

Extending respect, grace, confidentiality and compassion to sexually exploited and prostituted girls and women in the acknowledgement of their experienced traumas.

Excellence

In services offered and with integrity in using resources.

Holistic Transformation

Encouraging sexually exploited girls and women's renewal and wellbeing in body, mind, spirit and relationships.

Collaboration

Encouraging community involvement in the continuum of care to facilitate sexually exploited girls' and women's access to services and resources.

Due to the nature of the work at PEARL, alias names may be used for the protection of some individuals.

Message from the Director

“The light shines in the darkness, and the darkness has not overcome it.” 1 John 1:5

PEARL holds fast to the redemptive work of Jesus that every life has intrinsic value and worth and that everything is possible when we put our trust in Him.

Operating as a faith-based ministry in the heart of a spiritual battleground is a challenge few are equipped for, but we are thriving. Incidents of violence and the threat of violence are real when dealing with those with rapidly declining mental health. With the conditions in our city struggling with rampant open drug use and the frustrations felt - compassion can dry up and indifference can set in.

Despite this, we have seen God's tremendous blessings. Doors that have shut for us in some areas have proven to be protective and served as opportunities where God moved in greater ways. PEARL has had record intakes this past year, through referrals from community partners and word on the street. PEARL has become a major resource for vulnerable women seeking change.

In the face of mortality looming over the women we serve, we make it our mission to offer them life and hope found in Jesus at every opportunity. Genuine love steps out of its “comfort zone” and embraces the truth through love. *“Then you will know the truth, and the truth will set you free.” - John 8:32* This is what distinguishes PEARL.

It is not wrong to abhor a substance that brings destruction. Doing so is not stigmatizing; it is acknowledging the truth. Establishing boundaries isn't heartless but a beacon of hope that encourages individuals to reach greater heights and often empowers them to take the next steps. Real love endures all things, believes all things, hopes all things and never gives up. This is what defines PEARL. God's light shines in the darkness.

Cindy

EXECUTIVE DIRECTOR



Message from the Treasurer

It is with great joy that I continue to serve PEARL in my capacity as a board member and treasurer. I've been allowed to see, first-hand, the light of hope that is shared with those who come to PEARL, and how our staff and volunteers shed light through their love and care for those in our community.

In light of this 😊 I share, in this Annual Report, how wonderfully supportive all of you have been to PEARL in the past year. While our expenses seem to outweigh our income, Pearl has been blessed to have reserve funds to carry us through, so the services of PEARL do not need to be compromised. Prior years of fundraising have been gracious to PEARL, so even though we did not host an annual event this past fiscal year, we've stayed strong.

That being said, as we advance, we need each bit of shared light to carry the responsibilities that are PEARLs. Please allow me to encourage you, the reader, to choose PEARL as your organization to give to. There are so many wonderful ministries to support and I know it is overwhelmingly hard at times whom to choose to give to – so I thank you abundantly when it is PEARL you choose. Also, might I ask you to share PEARL with others – so that they may become aware of this local, grassroots, community-based, organization serving the vulnerable in our city.

I thank you for your time, and your support, we covet your prayers for all that PEARL is and does as we strive to shed light in the darkness” in Chilliwack.

Deborah Woelders

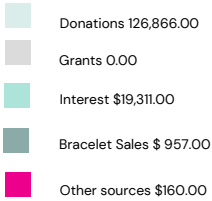
TREASURER



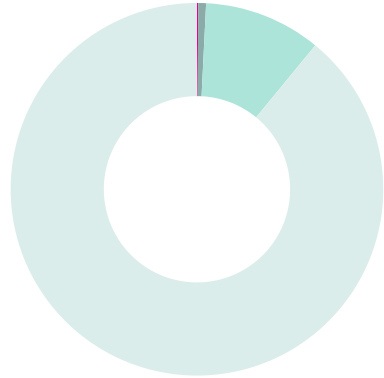
FINANCIAL REPORT

INCOME

Total Revenue \$147,294.00

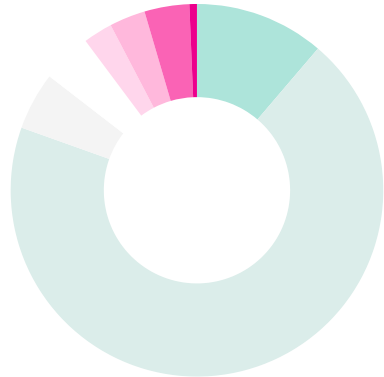


Note: No Fundraising event was held in this fiscal year



EXPENSES

Total Expenses \$192,277.00



It is a privilege to grow and work amongst these amazing women who faithfully work at PEARL with the heart of Christ. To watch Him move in and through them is an honour that I am continually in awe of. – Cindy



Tamara



Deb

*“Then I heard the voice of the Lord, saying, “Whom shall I send, and who will go for Us?” Then I said, “Here am I. Send me!”
Isaiah 6:8*



Cheryl



Jessica

- Deb’s heart is full of faith. She is empathetic and continually interceding as our prayer warrior.
- Cheryl loves patiently, joyfully, and serving wholeheartedly. She is the warmth that welcomes you at the door.
- Tamara is a walking example of resilience strength and courage.
- Jessica is an encourager who continually infuses tangible hope and that all things are possible.

“And now abide faith, hope, love, these three; but the greatest of these is love.” 1 Corinthians 13:13



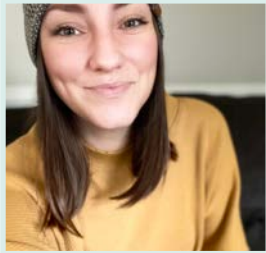
PEARL was part of a panel discussion at UFV For the Human Trafficking Awareness event offering an eye-opening local perspective on Trafficking in BC.

PEARL is now a recognized organization that hosts practicum students on their journey in social work. We have 2 students who have graduated from their particular programs and are working as causal support at the PEARL Resource Centre..



Charlie

She completed her Mental Health and Addictions Care Worker diploma at Sprott Shaw College after completing her practicum at Resource Center in March 2024.



Kayla

She completed her diploma in Social Services at UFV. She is in her 4th year of the Bachelor of Social Work program and completed her 3rd practicum at PEARL Resource Centre in April 2024.



CENTRE STATS

We are seeing trends of younger women seduced into addiction now having to pay debts by being exploited. This is what trafficking looks like on the ground in BC. Reminding women of their value and His redeeming love are often the starting points in the journey of healing.

- **72 individual** women accessed the Centre in the last 12 months
- new intakes reveal that we are a viable resource in Chilliwack and are highly referred
- over **1,782** meals given
- 0 Overdoses in the Centre
- daily faith-based workshops/devotions/prayer resulting in professions of faith
- helped women with decreased substance use plans, enter into detox and recovery programs
- several women were housed
- facilitated reunions with families
- provided court support
- women engaged in centre chores job readiness
- women volunteering in the community and gainfully employed
- several women have exited the life of prostitution.

1153

Centre visits in the last 12 months - increase of 30%.

44

New intakes this year - more than double the previous year

All were welcomed and received food, clothing, referrals, support, compassion, and prayer.

Community Impacts

Increased:

- minors in addiction and prostitution
- reports of violence, sexual violence
- mental health crisis including severe psychosis and violence
- drug toxicity
- drug overdoses/deaths

This year we have had many disclosures of violence, sexual assault, and abuse. Because of the secrecy and shame that prevents women from coming forward, we know this sadly reflects a much larger statistic.



Working with community partners such as Social Services is a joy. Hearing feedback on how valued PEARL is, is a huge encouragement.

highlights

This past year we have had many staff alumni returning to work at PEARL.



GW Graham's Social Justice class did an incredible art project for us as part of "Take Action Day"



For International Women's Day we had Survivor Peer Supports come to the Centre to share their experience, strength, and hope.

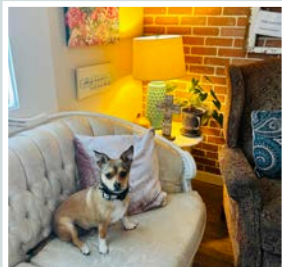


Our staff encouragement wall where participants and staff can leave notes of appreciation to one another.



Our new space! Available to support family visits or sober-seeking women engaging in workshops or working one on one with community partners.

A highlight is the number of women who are actively seeking recovery and those that are engaging in the faith journey of Alpha.



Buddy our resident comfort dog has been an amazing distraction to women in distress.



We celebrate our faithful volunteers who have become like family to our participants.



increasing number of women with handicaps and complex medical needs.

Challenges



Increasing number of seniors experiencing homelessness are accessing the centre



Increased reported incidences of violence and abuse.



Few immediate access safe shelter options for women.



Increasing trauma and decline of mental health.



Doubled in # of new intakes means more at-risk women in need.



Long waitlists for detox and treatment. Lack of medically-supported bed-based detox facilities.



Only 1 shower and up to 15 women accessing the Centre each day.



Increasing infections and lice outbreaks.

IN MEMORY OF

We mourn the loss of 2 women who were participants at PEARL.

Why I Volunteer at PEARL

Why do I volunteer, when I look back, over 10 years ago, I realize that my reason has changed over the years. The First exposure I had to PEARL was a fundraiser at our church. I felt that God was saying – “these girls could be your daughters; how would you help them?”. At the time my own girls were much younger, and some who came to Pearl were their age, my heartstrings were torn. I did not feel as though I was qualified or had any training that would be useful, but I did know that I could cook and clean and pray. So that started my journey. I applied, was interviewed, read all the manuals, and had 3 days of orientation and the rest is history. I know at the beginning I thought that this would be easy and that they would not need me. But as time passed, I felt my heart reach out to the staff and clients.

I now volunteer because God has laid this desire in the depth of my soul. Would I say it is relaxing/laid back? No, Would I say it is fun and uplifting like hosting a party? No, but Would I say I have peace knowing this is where God wants me to be a few times a month?, YES!!! I would say daily I have learned so much, and my knowledge of the world has expanded, I see hurt and a deep sadness but I am reminded daily here that this hurt is only cured by a relationship with the Lord and this is very obvious each day I volunteer at Pearl. Through volunteering, I have learned new skills and gained new experiences that have helped mold me into the person I am now. I ensure that I share my experiences and the hurt in our community with my community to make them aware so that they are more informed!!

Volunteering at Pearl has also taught me the importance of gratitude and appreciation for the blessings I have in life. My time here is to give to those who are sometimes unable to give themselves even the basics of needs. I can bake, cook, clean, pray, listen, cry and rejoice all in the same day, with the women (staff or clients) that come in PEARL's doors. They all have needs and God has laid it on my heart to follow His calling.

These are all God's children, and we all need a little helping hand now and then.

Kimberlei
PEARL Volunteer



Why I Serve as Staff

In 2019, PEARL's founder, Joan Goosen, shared about the ministry of PEARL at my church, Greendale MB. I felt drawn to it right away. I had always wondered how I could help those experiencing homelessness. I asked God if he would confirm that I should indeed work at PEARL – months later, I was driving down East Hastings like I have done many times before - but this time I could not stop crying, I sobbed and sobbed. My heart was broken for those living on the streets. That was the moment I knew I could do something to help, to be a part of loving the most marginalized people in our society. I knew then that God confirmed that I should be a part of PEARL.

What I find most challenging about working at PEARL is witnessing the serious mental health issues and psychosis from the drugs – those things can make it difficult to connect and it is so heartbreaking to see those you care about hurting so much.

Working with other women of faith shines a bright light on these bleak situations. Our staff and volunteers share God's truth and love with the ladies who come, to the lost and hurting, and it is a beautiful thing to witness and be a part of.

Serving at PEARL is the opportunity to love and treat the women who come in like I would treat my own family - with love, respect, and without judgment. I want them to know they are worthy of love and important and that they matter.

“...in Your light we see light.” Psalm 36:9

Cheryl
Support Worker



Why I Support PEARL as a Donor

I got involved with Pearl Life Renewal Society once I saw the passion, dedication and devotion to the women in our community by Joan and Gerry Goosen . Joan's desire to try to help women in our community who were needing help and assistance from being trapped or pushed into prostitution, drugs or other unhealthy lifestyles really resonates with me too from a personal standpoint.

Meeting the care workers, other donors and supporters and seeing their desire to also help out encouraged me to dedicate some financial support to also help out in a small way. I've seen many of the staff over the years and loved to see their personal care and efforts to help these women gain freedom from their past , as well the spiritual component to try to lead them into a faith with Jesus in living a new life with a purpose of hope and renewal in their lives. As Christ leads us to feed others with both food and spiritual food, Pearl Life Renewal Society helps these women with their physicals needs as well as their spiritual/emotional/mental needs which is so important.

I am proud of my association with this amazing team and I wish them well in their daily mission of helping young girls and women in our community.

Justin Cathcart
Cathcart Financial Solutions inc .

Joan Goosen

PEARL'S FOUNDER

We would like to acknowledge our founder and the impact she has made on all of us at PEARL and in our community. We have all been inspired by Joan Goosen's steps of faith as she walked in obedience to GOD in starting this ministry. Serving with integrity and excellence in a trauma-informed practice are the cornerstones of PEARL. Joan's dedication, strength, and ability to cast vision empower everyone she encounters. Joan's bold faith and trust in the LORD is what we hope to continue to emulate here at PEARL.



We continually remember before our God and Father your work produced by faith, your labor prompted by love, and your endurance inspired by hope in the Lord Jesus Christ. 1 Thessalonians 1:3

REMEMBER TO SAVE THE DATE

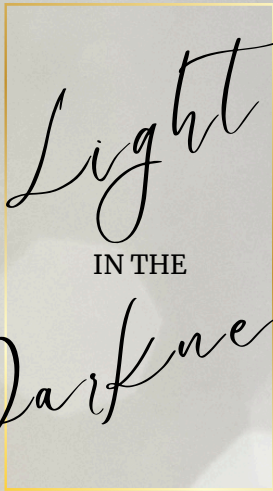
November 9, 2024

Central Community Church
46100 Chilliwack Central Road, Chilliwack, BC

PEARL LIFE RENEWAL PRESENTS

2024 ANNUAL FUNDRAISER AND AWARENESS EVENT

Light
IN THE
Darkness



Thank you!

to all of our prayer and ministry partners,
volunteers, generous donors and sponsors!



PEARL Life Renewal Society
PO BOX 591, Station Main
Chilliwack, BC V2P 7V5
604-402-HOPE (4673)
www.pearlliferenewal.com

Stay connected with us through facebook @pearlliferenewal

Want to donate?

Our Registered Charity # is: 760269092RR0001